

Programming a New Bilateral Recipient with Naída CI Q70



□ Connect the Recipient's Equipment and Open SoundWave™ (Version 2.2 or later)

□ Create the Patient File

- Select New in the Action Pane, enter the required information, and select OK
- The Implants Window will open. Select New, enter the required information for both sides, and select OK

Note: The New Implant Window will appear when the headpiece is placed on the recipient.

□ Condition Electrodes

- Select the Impedances Tab and then click on *Condition Right* or *Condition Left* in the Action Pane.
- Alternatively, select *Run Conditioning* from the implant icon in the Fitting Hardware Task Group.

Note: Impedances run by default when communication is established between the recipient file and the implant, and following Conditioning.

□ Create Programs

- Go to the Programs Tab
- Select New Right, New Left, or New Bilateral in the Action Pane
- Select the Mic Source for use with Naída CI Q70 (Naída CI) sound processor(s)
 - Mic Source is found next to Naída CI icon in the ribbon bar

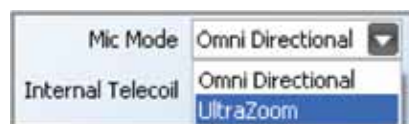


Note: The Mic Source setting in the ribbon bar is not saved to the program.

- T-Mic™ is recommended for everyday use
- Select a Strategy. Consider using the HiRes™ Optima sound processing* strategy for optimal battery life
- Change Audio Mixing to Mic Only to create an everyday program
- Set M levels with Live Speech, Speech Burst™, or Tone Burst stimulation
- Optimize the program(s) based on recipient feedback
- Save and Close the program(s)

□ Consider creating an UltraZoom program

- Copy the program(s) created for everyday use with Naída CI
- Change Mic Mode to UltraZoom



- Save and Close the program(s)

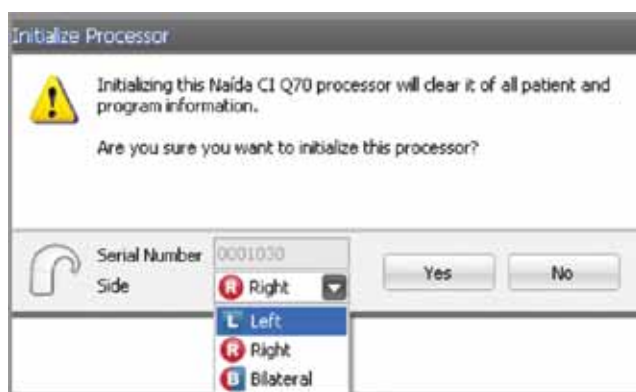
Note: UltraZoom is designed to focus on sound in front of the listener for improved speech understanding in noise. ClearVoice™* is still recommended for everyday listening in dynamic environments and can be used in conjunction with UltraZoom.

□ Create a telecoil program, if desired

- Copy the program(s) created for everyday use with Naída CI
- Change Audio Mixing to a setting that includes an Aux input, for example 50/50 – Mic/Aux
- Change Internal Telecoil to On
- Optimize the program(s) based on recipient feedback
- Save and Close the program(s)

□ Initialize Naída CI(s)

- Select Initialize from the Processor Pane or the Fitting Hardware Task Group
- Initialize Naída CI(s) for Left, Right, or Bilateral use

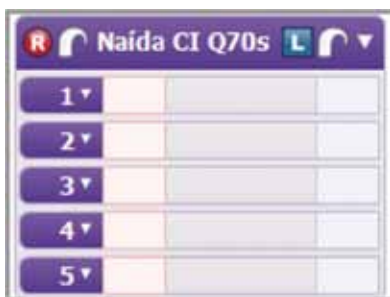


Note: When initialized as a bilateral processor, Naída CI can hold up to 5 programs for each side and can be used for either the Right or Left side.

□ Place the desired program(s) into the program slot(s)

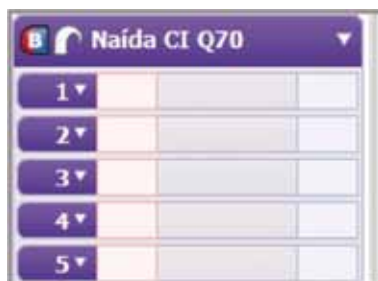
- Up to 5 programs for one side can be downloaded into Naída CI if the Naída CI is initialized as a unilateral processor

Two sound processors →



- Up to 5 programs for each side can be downloaded into Naída CI if the Naída CI is initialized as a bilateral processor

One sound processor →



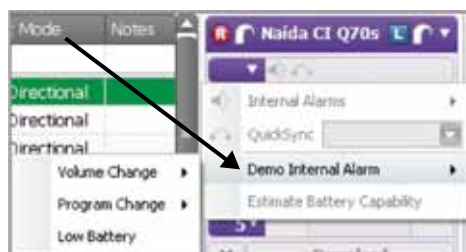
- A recipient does not have to have all 5 program slots filled. The number of programs in Naída CI will be based on the number of programs downloaded to the processor. There will be no empty program slots on the Naída CI
- UltraZoom and telecoil programs are not recommended for everyday use; therefore, it is not recommended that either type of program is placed in Program 1

□ Manage internal alarms for Naída CI

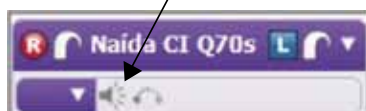
- Demo internal alarms if desired
 - Turn on stimulation from the program slot drop-down menu



- Demo Internal Alarm is found in the drop-down menu to the left of the internal alarm icon



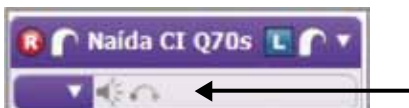
- Enable internal alarms if desired
 - Internal alarms are disabled by default
 - Click on the internal alarm icon to enable



- The icon will turn orange to indicate that internal alarms are enabled. When internal alarms are enabled, the recipient will hear unique alarms to indicate a volume change, program change, and low battery alert. Each alarm setting can be enabled/disabled individually
- The internal alarm setting applies to all programs in Naída CI

□ Manage Quicksync for Naída CI

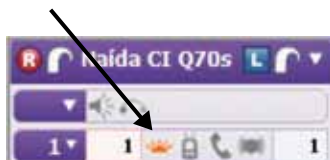
- Quicksync is disabled by default
- Click on the Quicksync icon to enable if desired



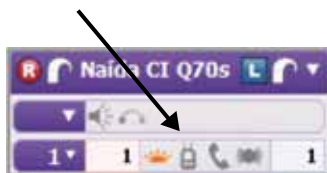
- The icon will turn orange to indicate that Quicksync is enabled
 - When Quicksync is enabled, it is enabled for both volume and program changes
 - Edit the Quicksync options in the drop-down menu to left of the internal alarm icon
 - Select Program Change or Volume Change and Quicksync will be active for the selected setting only

□ Manage program slot specific settings in the processor pane

- Disable/enable the processor LED as desired
 - The Naída CI LED is enabled in each program slot by default
 - Click on the LED to disable



- Consider activating the ComPilot in all program slots if the recipient has a ComPilot
 - Click on the ComPilot icon in each program slot to enable



- Consider activating DuoPhone
 - DuoPhone is recommended for use in program slot 2 in order to provide easy access when the phone rings. DuoPhone is not recommended for everyday use and is, therefore, not recommended for use in program slot 1
 - Click on the DuoPhone icon in the desired program slot to enable

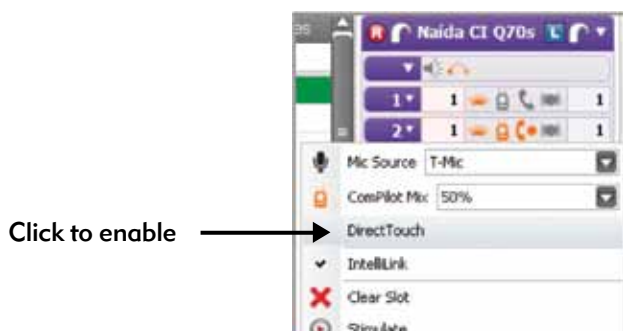


- The ComPilot icon will be enabled also
- DuoPhone and ZoomControl cannot be enabled in the same program
- DuoPhone Left is the default. Click on the DuoPhone icon again to change to DuoPhone Right. An additional click deactivates DuoPhone

- Consider creating a ZoomControl program
 - ZoomControl is not recommended for everyday use; therefore, ZoomControl is not recommended for use in program slot 1
 - Click on the Zoom Control icon in the desired program slot to enable



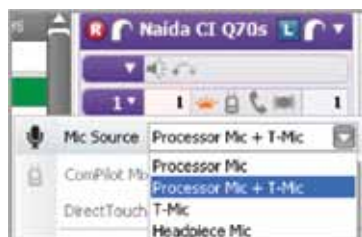
- The ComPilot icon will be enabled also
- ZoomControl and DuoPhone cannot be enabled in the same program
- ZoomControl Left to Right is the default. Click on the ZoomControl icon again to change to ZoomControl Right to Left. An additional click deactivates ZoomControl
- When ZoomControl is activated, recipients can override the default setting using the AB myPilot or DirectTouch
- Consider enabling DirectTouch from the program slot drop-down menu in order to provide access to DuoPhone/ZoomControl Right and Left in a given program



- DirectTouch can only be enabled when QuickSync is enabled

□ Manage program slot-specific settings in the drop-down for each program

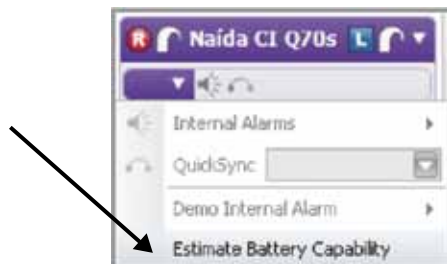
- Select the Mic Source for each program in the program slot drop-down menu



- T-Mic is recommended for everyday use
- Mic Source cannot be selected for an UltraZoom program as it is automatically set to Processor Mic
- Select the ComPilot Mix for each program in which ComPilot is enabled
 - 50% is the default ComPilot mix setting

□ Estimate battery capability if desired

- Battery estimation is found in the drop-down menu to the left of the internal alarm icon



- Click on Estimate Battery Capability and a chart will be generated that estimates battery life for all battery options available with Naída CI. To estimate battery life, confirm that the headpiece is on the recipient and turn stimulation off
- If running Estimate Battery Capability for a bilaterally initialized Naida CI, battery information will be generated for the side to which the headpiece is connected

Note: Naída CI must be locked to the implant in order to estimate battery capability.

□ Select Download to load all programs and settings into Naída CI

Note: Programs can be downloaded to a back-up sound processor by using the Visit History tab: click, drag, and drop a Visit History record onto the Processor Pane.

